



G6 - Lithium Spare Parts Guide

Updated March 2011

www.emotoev.com/support

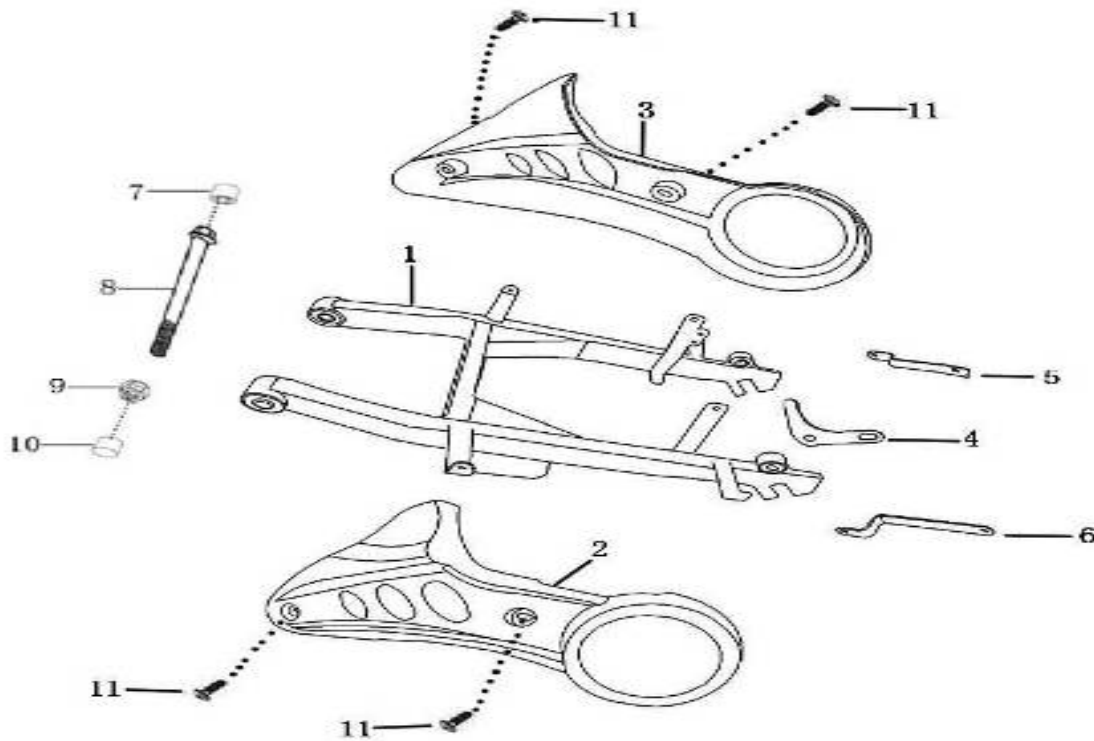


Figure 1

NO.	Part Number	Description
1	SPG6-00270	Rear fork
2	SPG6-00065	Left rear fork frame cover
3	SPG6-00070	Right rear fork frame cover
4	SPG6-00101	Rear disk brakefixed trestle
5	SPG6-00172	Right,back wheel fender frame
6	SPG6-00171	Left,back wheel fender frame
7		Front wheel spindle bonnet
8		BoltM12*235
9		Flange Lock NutM12
10		Front whet spindle bonnet
11		Screws,cross recessed,oval head,oval head M6X12

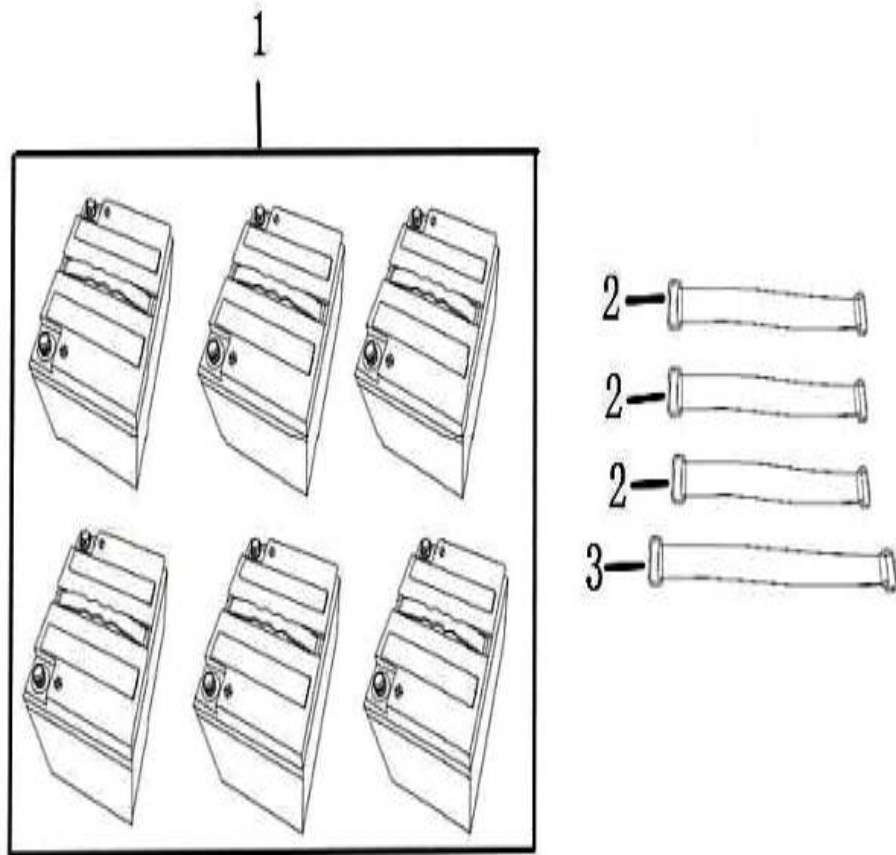
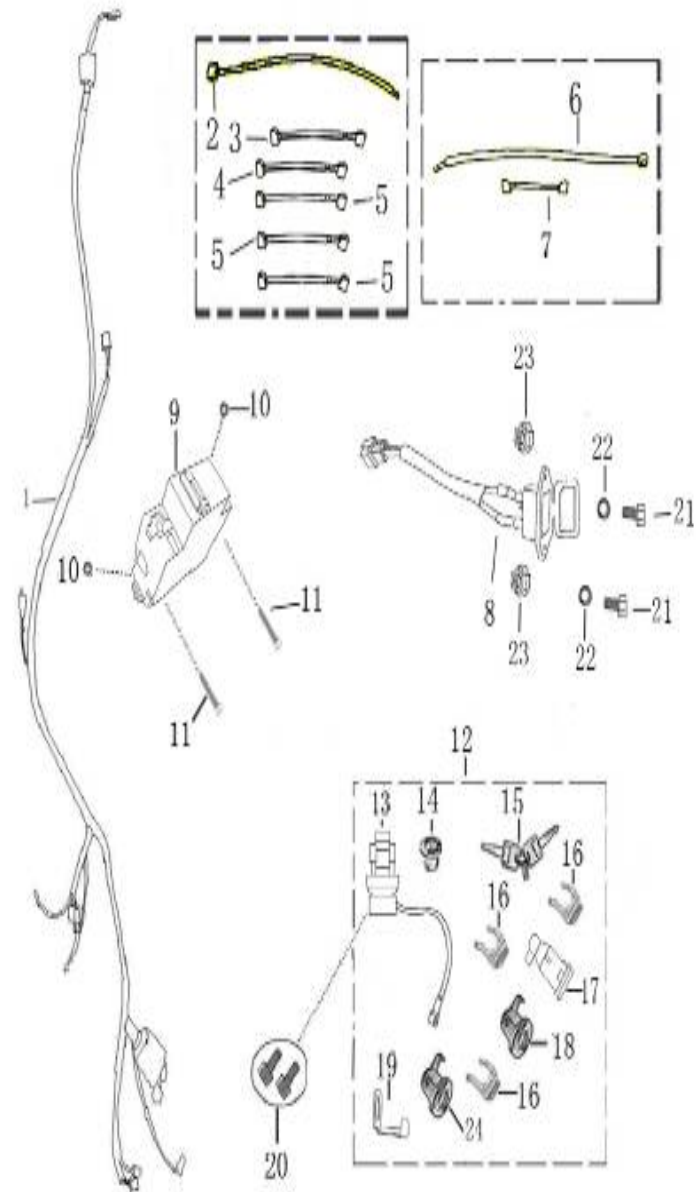


Figure 2

NO.	Part Number	Description
1	SPG6-00020	Battery
2	SPG6-00025	Battery bandage
3	SPG6-00026	Battery bandage

Figure 3

NO.	Part Number	Description
1	SPG6-00400	Wire Harness
2		Battery connecting line (Red 520mm14mm2)
3		Battery connecting line (Red 240mm14mm2)
4		Battery connecting line (Black 230mm14mm2)
5		Battery connecting line (Red 230mm14mm2)
6		Battery output line (Red 730mm14mm2)
7		Battery connecting line (Red 360mm14mm2)
8	SPG6-00410	Recharge socket assy
9	SPG6-00155	Circuit Breaker
10		Hexagon thin nuts M3
11		Cross Recess Head Screw GB/T818-M3x35
12	SPG6-00575	Lock Set Assy
13		Ignition Switch Assy
14		Cap, Lock
15		Key (Foldaway)
16		lock catch
17		Seat Lock
18		Hooded lock,seat
19		
20		Flange Bolt, M8x35
21		Flange Bolt, M4x12
22		
23		Flange Lock Nut M4
24		



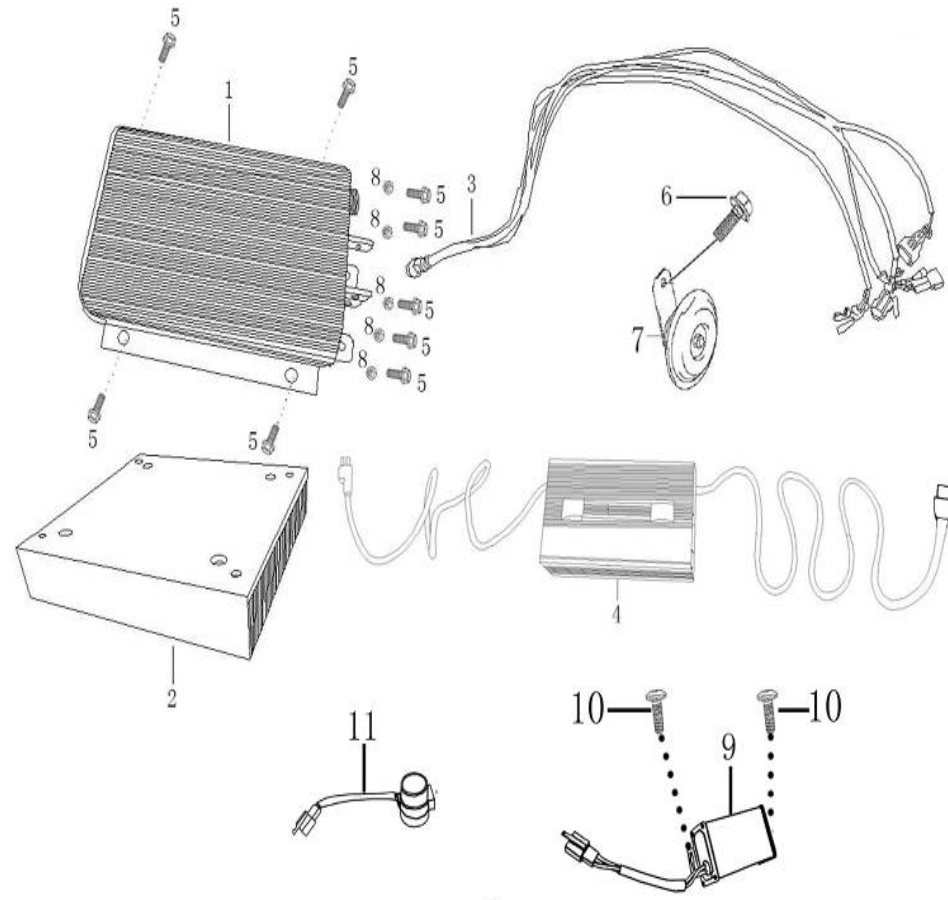
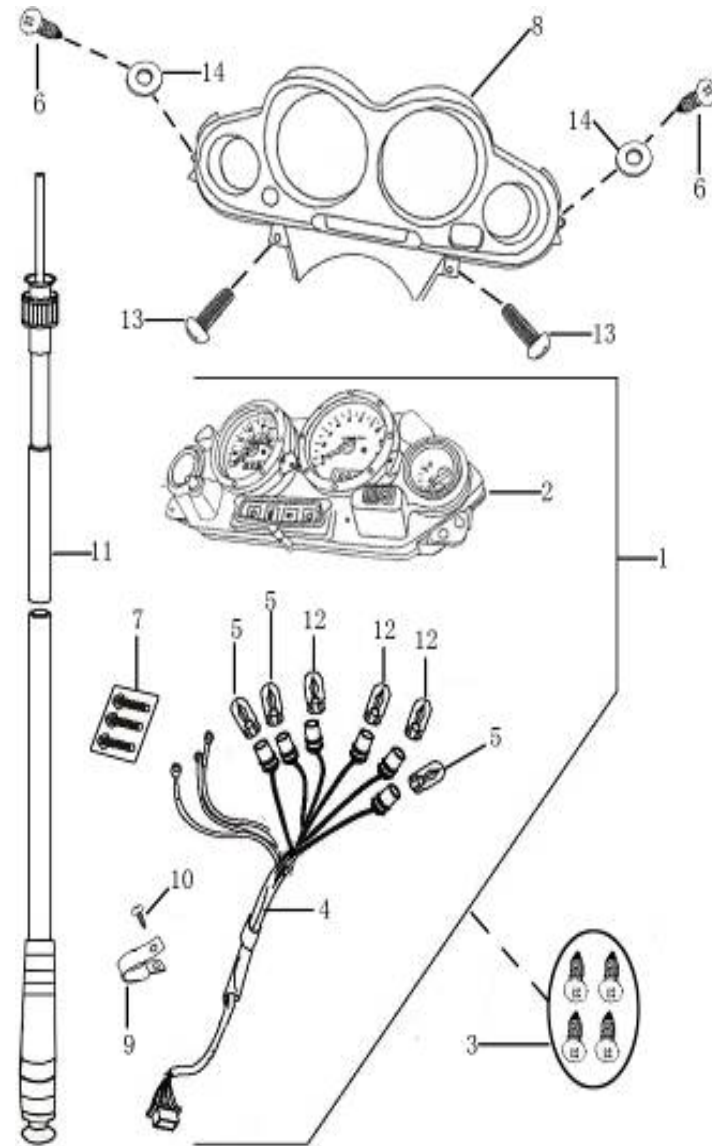


Figure 4

NO.	Part Number	Description
1	SPG6-00160	Controller
2	SPG6-00161	Heat Sink
4	SPG6-00480	Battery Charger
5		Flange Bolt, M6×12
7	SPG6-00225	Horn DL127(I E4000113)12V1.5A
8		Flange Nut, M6
9	SPG6-00345	Converter(DC/DC72-12V)
10		Screw M6×12
11	SPG6-00360	Winker Relay

Figure 5

NO.	Part Number	Description
1	SPG6-00300	Meter Assy
2		Meter
3		Screw, Tapping ST4.2×16
4	SPG6-00304	Wire Cable, Meter
5		Bulb (12V W3W,black point)
6		Screw, Tapping ST4.8×16
7		Screw, M3×22
8	SPG6-00303	Meter [蓋]Cover
9		Measuring cable retaining clip (plastics)
10		Screw, Tapping ST4.2×10
11	SPG6-00305	Cable, Odometer(940mm)
12		Bulb(12V W2W)
13		Screw, M6×16
14		Plain Washer φ 8× φ 12



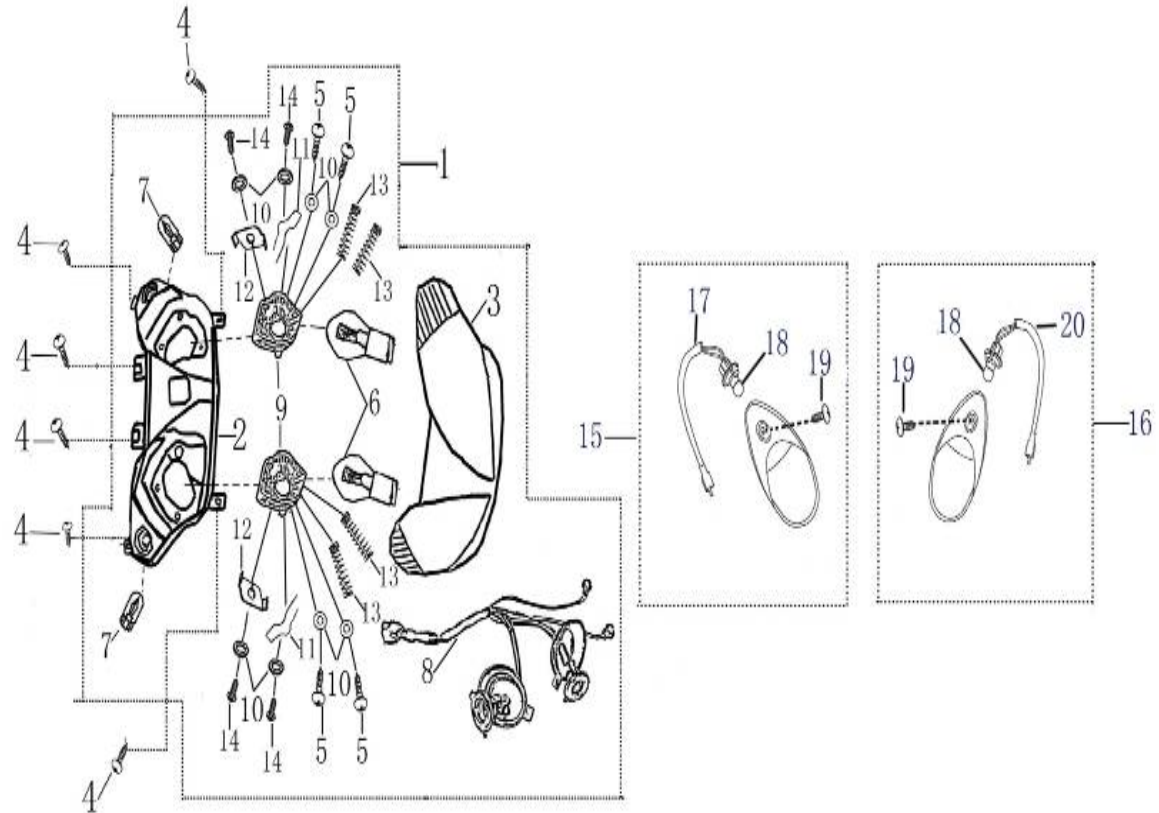


Figure 6

NO.	Part Number	Description
1	SPG6-00215	Headlight Comp Assy
2	SPG6-00219	Hood, Headlight
3	SPG6-00490	Lens, Headlight
4		Screw, Tapping ST4.8×12
5		Screw, Tapping ST4.2×25
6		Bulb, (S2 12V 35/35W)
7		Bulb, 12V W3W
8	SPG6-00218	Wire Cable, Headlight
9	SPG6-00485	Reflector Net of Front Lamp
10		Plain Washer, $\phi 5 \times \phi 10$
11		Clip, Light Holder
12		Clip, Light Holder
13		Spring
14		Screw, Tapping ST4.8×12
15	SPG6-00375	Turning Light,Front,R Assy
16	SPG6-00365	Turning Light,Front,L Assy
17	SPG6-00368	Wire Cable, L. Front Turning Light
18		Bulb 12V 10W
19		Screw, Tapping ST3.8×10
20	SPG6-00378	Wire Cable, R. Front Turning Light

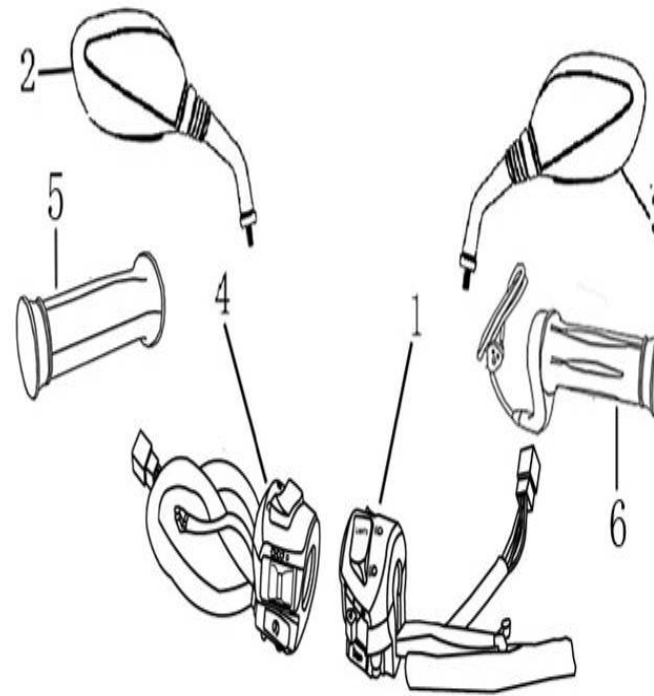


Figure 7

NO.	Part Number	Description
1	SPG6-00200	Left switch
2	SPG6-00261	Rear View Mirror, L.
3	SPG6-00262	Rear View Mirror, R.
4	SPG6-00205	Right switch
5	SPG6-00195	Rubber Grip, L. Handle
6	SPG6-00195	Rubber Grip, R.Handle(Hall effect)

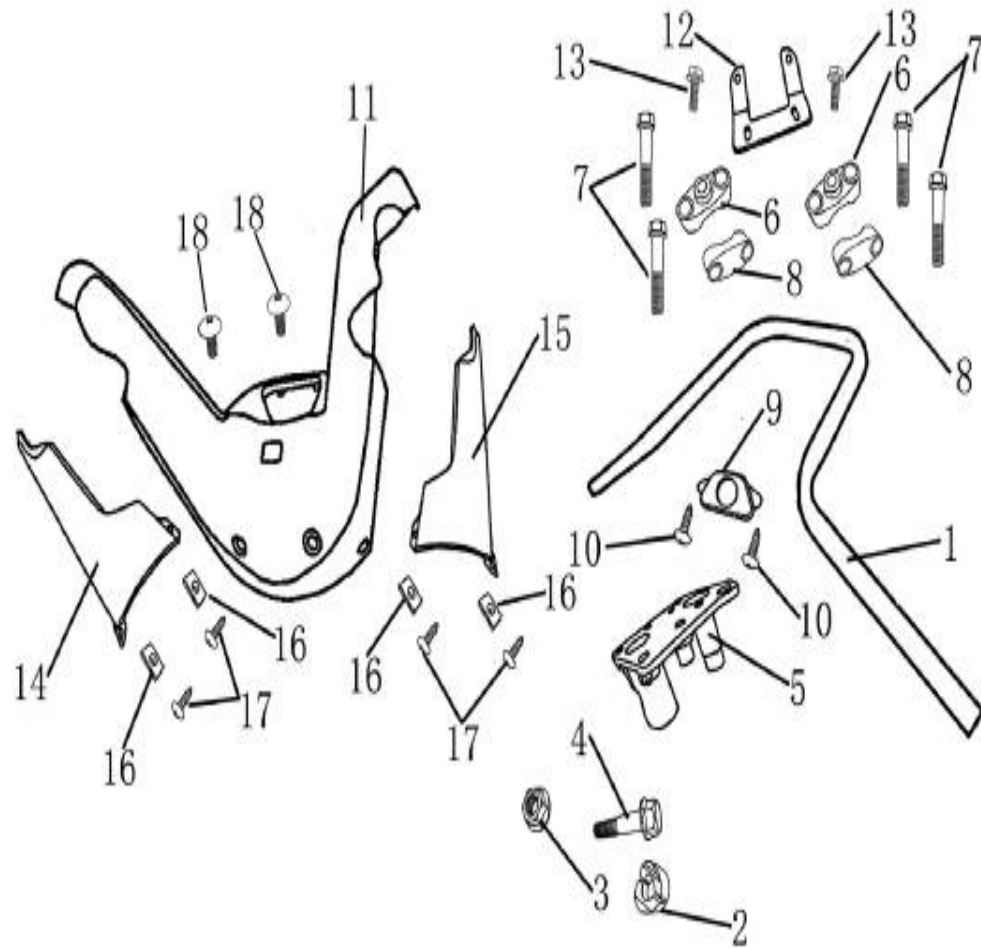


Figure 8	Part Number	Description
1	SPG6-00210	Handle Comp
2		Lock Bush
3		Flange Lock Nut M10
4		Flange bolt M10×50
5	SPG6-00211	Handle Bar Bracket
6	SPG6-00212	Top Fixing Plate,Handle
7		Flange bolt M8×55
8	SPG6-00213	Bottom Fixing Plate,Handle
9	SPG6-00231	Cover,Blank Key
10		Screw, TappingST4.2×10
11	SPG6-00050	Top Cover,Handle
12	SPG6-00214	Cover Bracket,Handle
13		Flange bolt, M6×12
14	SPG6-00051	Side Cover,Handle Bar R
15	SPG6-00052	Side Cover,Handle Bar L
16		Clamp, 4.2mm
17		Screw, TappingST4.8×16
18		Screw,M6×16

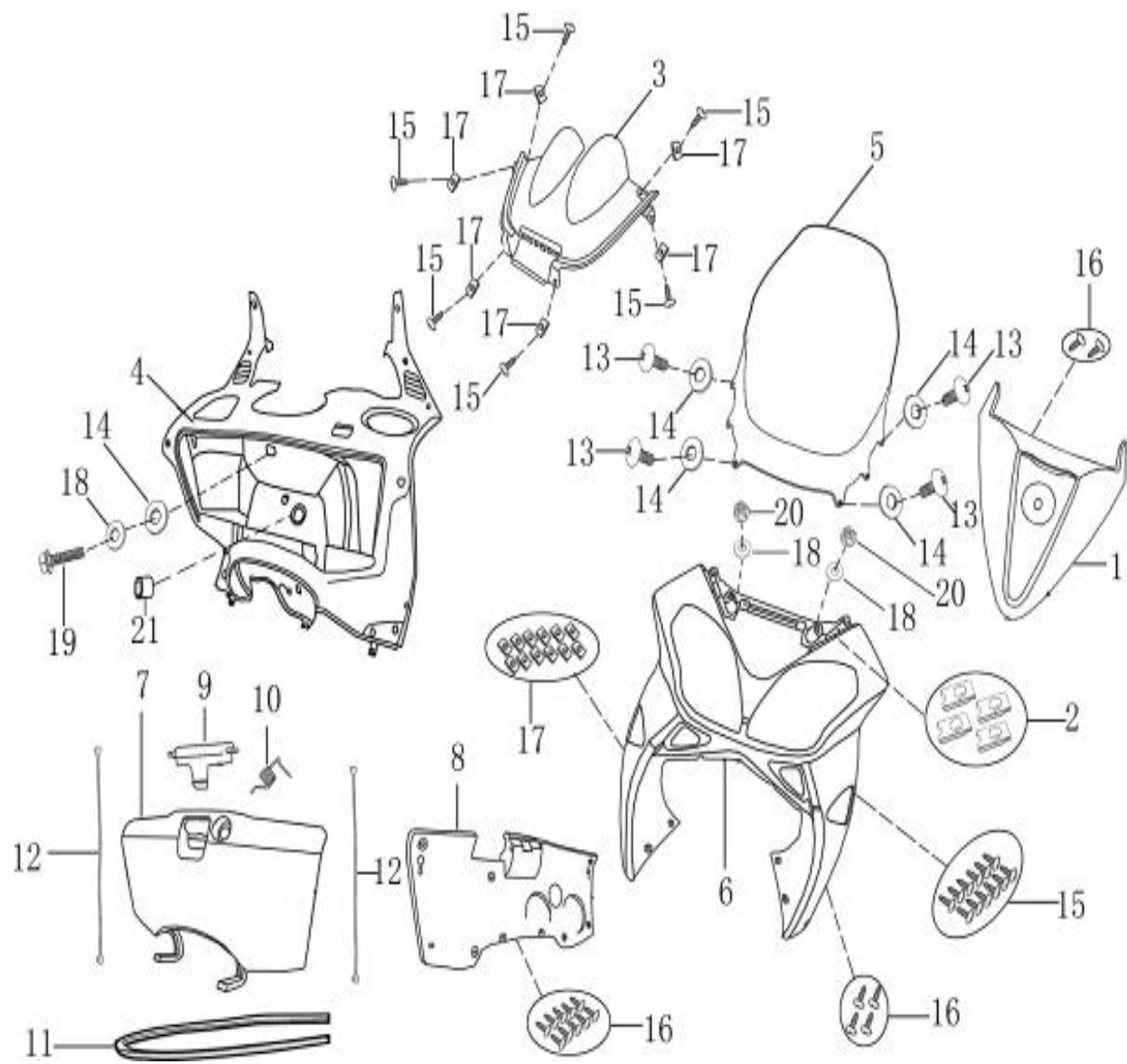


Figure 9

Figure 9

NO.	Part Number	Description
1	SPG6-00060	Front Cover
2		Clamp M6
3	SPG6-00550	Meter [カ] Upper Cover
4	SPG6-00555	Front Luggage Carrier
5	SPG6-00460	Windshield
6	SPG6-00545	Front Shield
7	SPG6-00045	Cover,Front Luggage Carrier
8	SPG6-00045	Inner Cover,Front Luggage Carrier
9	SPG6-00560	Gripe, Front Luggage Carrier
10	SPG6-00561	Spring,Cover,Front Luggage Carrier
11	SPG6-00563	Seal Gasket
12	SPG6-00562	Tool box lid anchor rope
13		Cross Screw M6×16
14		Rubber Plain φ 6× φ 20×3
15		Screw, Tapping ST4.8×16
16		Screw, Tapping ST4.2×12
17		Clamp, 4.2mm
18		Plain Washer, φ 6× φ 18
19		Flange Bolt, M6×16
20		Flange Nut [カ] M6
21		Rubber Stop

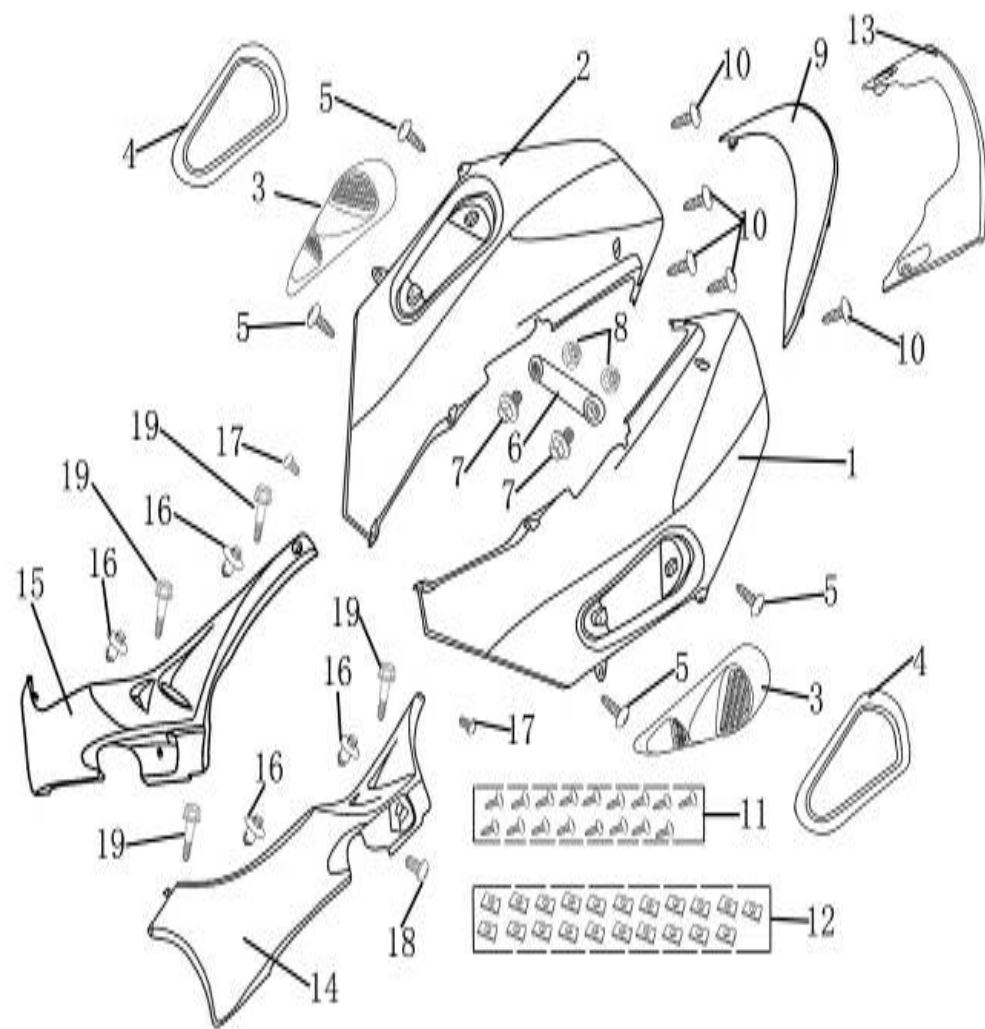


Figure 10

Figure 10



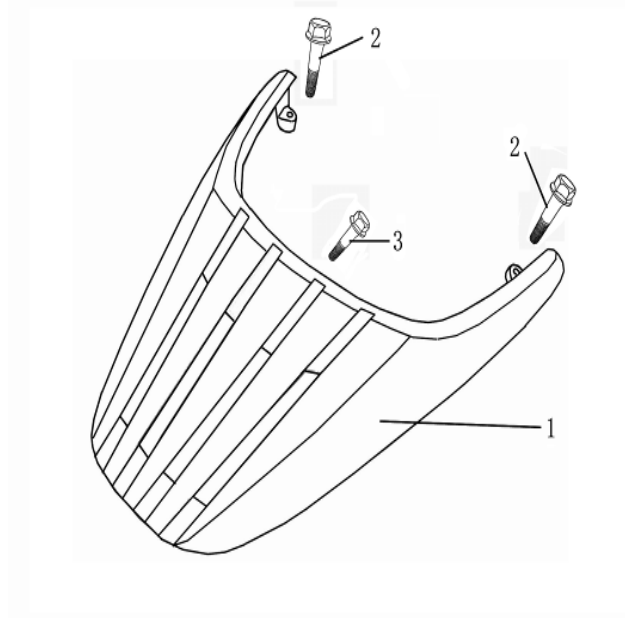
NO.	Part Number	Description
1	SPG6-00075	L. Decorating Cover
2	SPG6-00080	R. Decorating Cover
3	SPG6-00560	Intake,Decorating Cover 
4	SPG6-00561	Chrome ring,Decorating Cover 
5		Screw, Tapping ST4.2×12
6		Small Connecting Bar,Decorating Cover
7		Flange Bolt, M6×12
8		Flange NutM6
9	SPG6-00562	Connecting Bar,Decorating Cover
10		Screw, Tapping ST4.2×12
11		Screw, Tapping ST4.8×16
12		Clamp, 4.2mm
13	SPG6-00563	Rear Shield
14	SPG6-00086	L Protecting Plate
15	SPG6-00090	R Protecting Plate
16		Screw
17		Cross Screw,M5×20
18		Cross Screw,M6×20
19		Flange Screw,M6×20

Figure 11

NO.	Part Number	Description
1	SPG6-00419	Handle, Baggage Rack
2		Flange Bolt, M8×35
3		Flange Bolt, M8×20



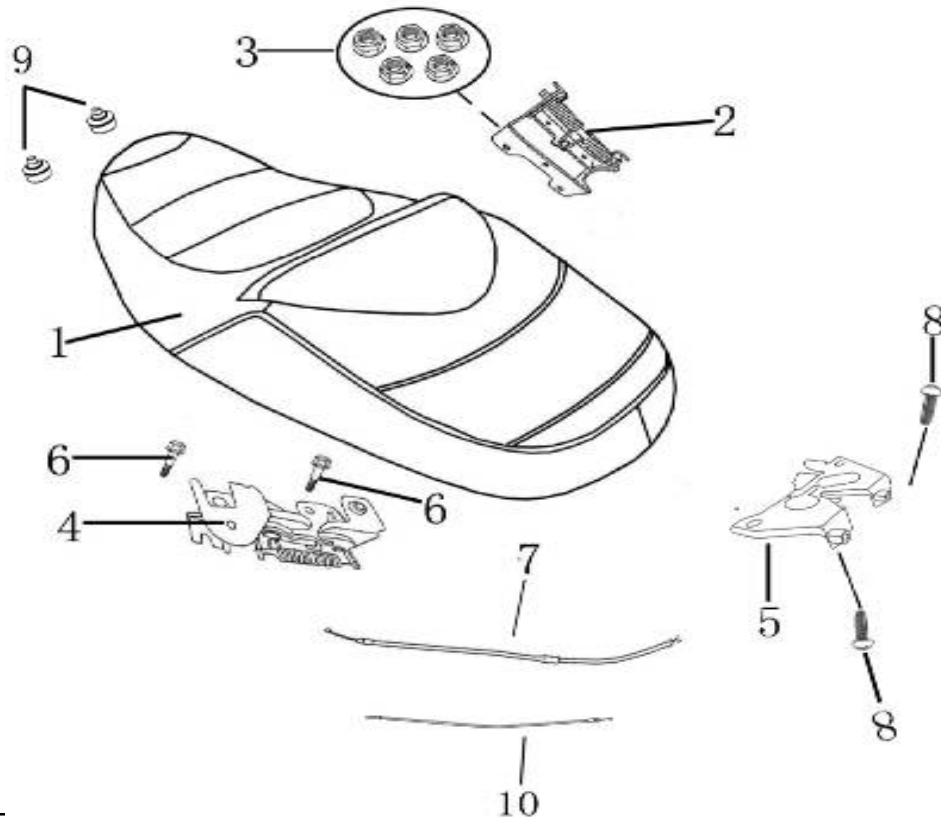


Figure 12

NO.	Part Number	Description
1	SPG6-00285	Seat Assy
2	SPG6-00565	Rocker Arm[1]Seat
3		Flange Nut, M6
4	SPG6-00286	Bracket A,Seat Lock
5	SPG6-00286	Bracket B,Seat Lock
6		Flange Bolt, M6x20
7		
8		Screw M6x16
9		Rubber washer,Seat
10		

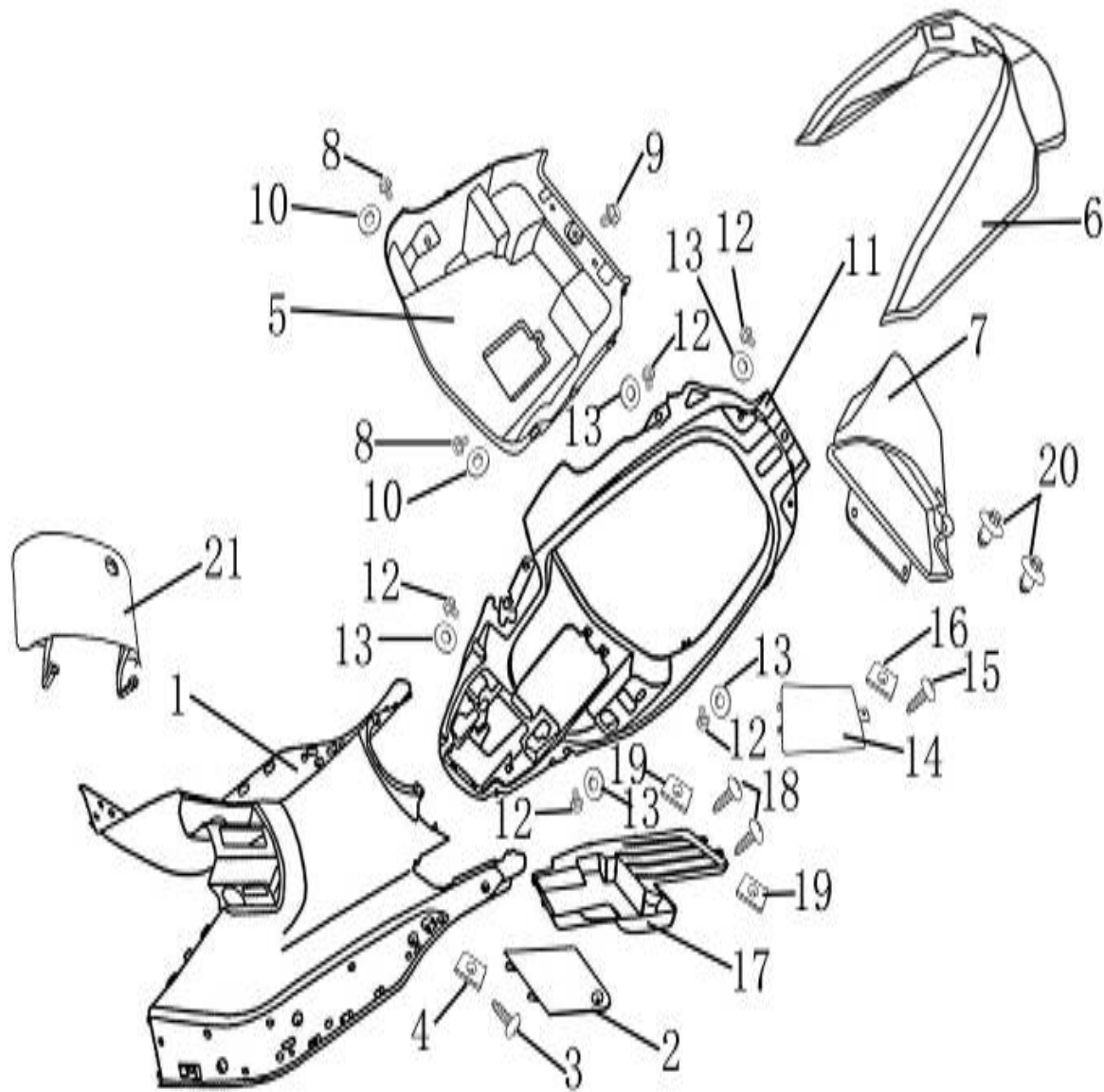
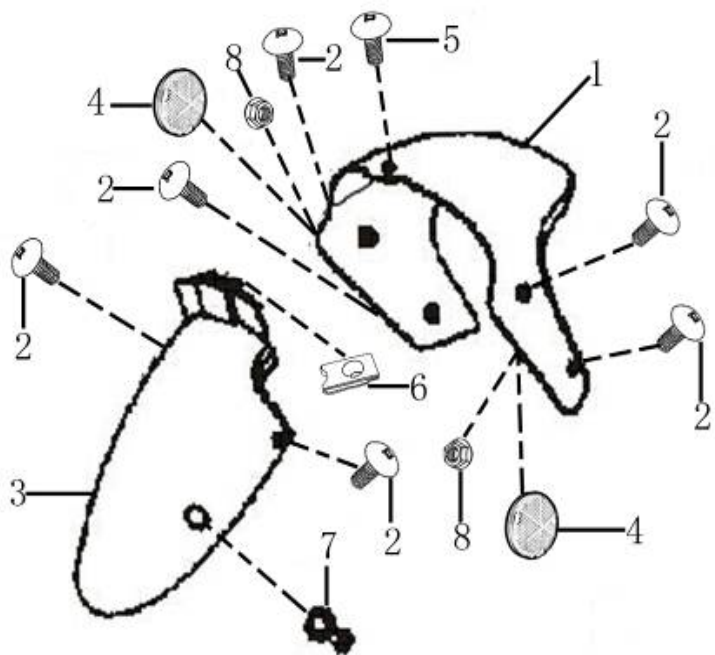


Figure 13

Figure 13

NO.	Part Number	Description
1	SPG6-00510	Footrest Base Panel
2		
3		Screw, Tapping ST4.8×16
4		Clamp, 4.2mm
5	SPG6-00560	Down,Luggage Cabinet
6	SPG6-00561	Top,Luggage Cabinet
7	SPG6-00562	Rear,Luggage Cabinet
8		Flange Bolt, M6×12
9		Flange Bolt, M8×12
10		Plain Washer, φ 6
11	SPG6-00292	Front Cover, Luggage Cabinet
12		Flange Bolt, M6×12
13		Plain Washer, φ 6
14	SPG6-00563	Inner Cover of Luggage
15		Screw, Tapping ST4.8×16
16		Clamp, 4.2mm
17	SPG6-00430	Battery Box Cover
18		Screw, Tapping ST4.8×16
19		Clamp, 4.2mm
20		Screw
21		Cover,Fuel Inlet



NO.	Part Number	Description
1	SPG6-00495	Front, Front Mudguard
2		Screw, M6×12
3	SPG6-0420	Rear, Front Mudguard
4	SPG6-00487	Side Retro Reflecting Device(IA-E4-023360)
5		Screw, M6×16
6		Clamp, M6
7		Rubber Clip, speedmeter cable
8		Flange Nut M5

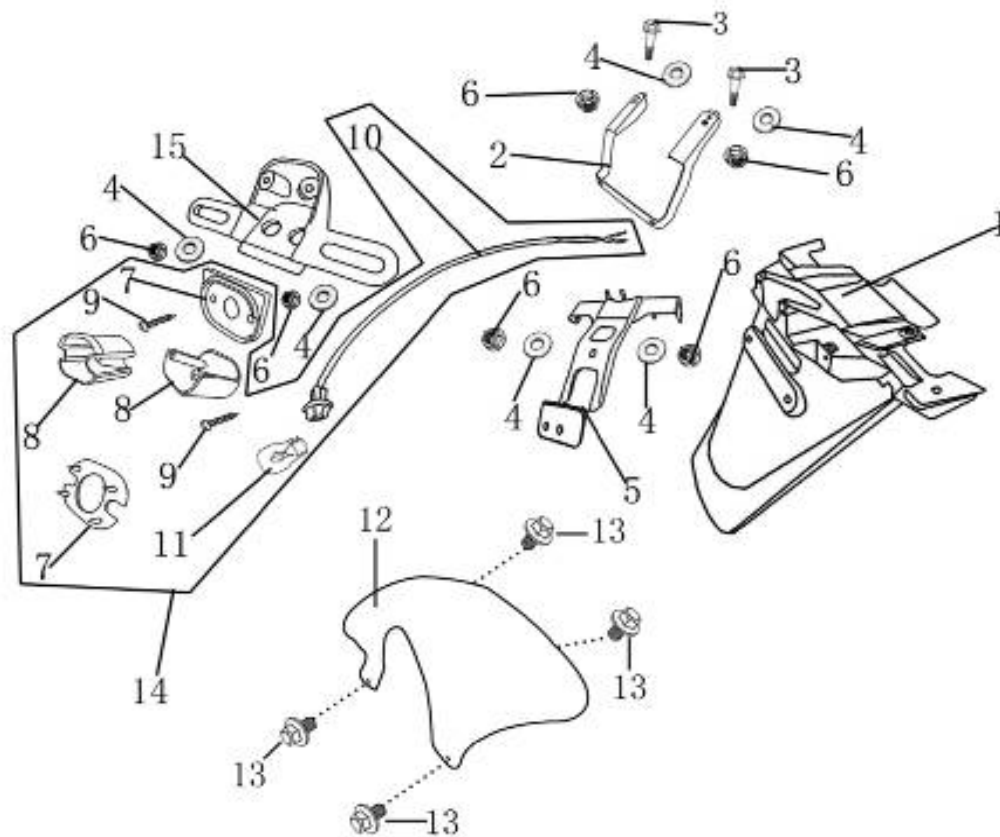


Figure 15

NO.	Part Number	Description
1	SPG6-00565	Rear Plate
2	SPG6-00566	Rear Plate Bracket
3		Flange Bolt, M6×16
4		Plain Washer, φ 6
5	SPG6-00567	License Holder A
6		Flange NutM6
7		Cushioning Rubber
8	SPG6-00568	License Light Cover
9		Screw, Tapping ST3.8×20
10	SPG6-00568	License Light Wire
11		Bulb,License Light
12	SPG6-00425	Rear Mudguard, Rear Wheel
13		Bolt with Washer, M6×12
14	SPG6-00568	License Light Assy
15	SPG6-00567	License Holder B

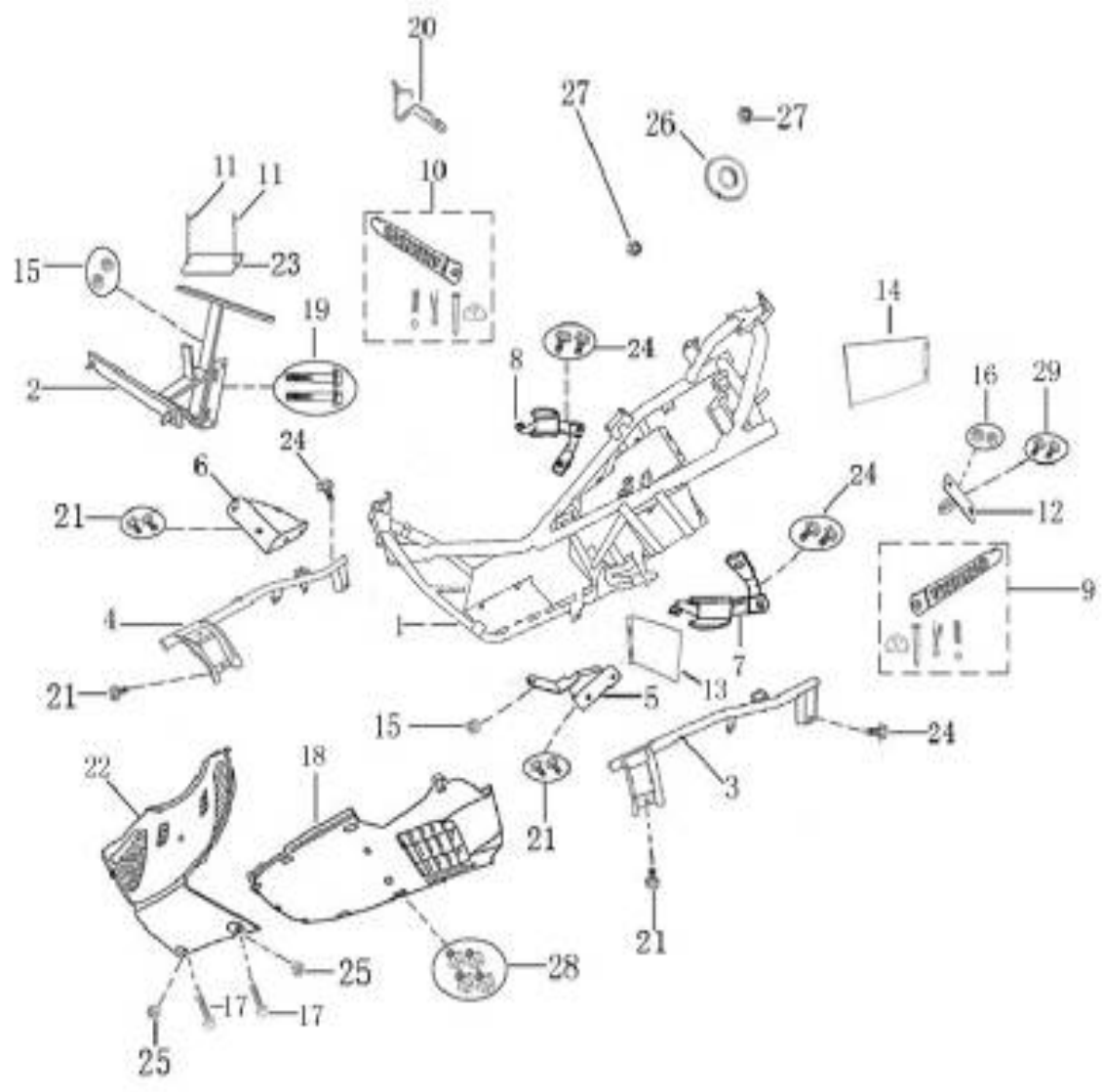




Figure 16

Figure 16

NO.	Part Number	Description
1	SPG6-00190	Frame
2	SPG6-00226	Bracket, Horn
3	SPG6-00191	Side Holder L
4	SPG6-00192	Side Holder R
5	SPG6-00570	Foot Deck Bracket L
6	SPG6-00571	Foot Deck Bracket R
7	SPG6-00572	Footrest Bracket L
8	SPG6-00573	Footrest Bracket R
9	SPG6-00530	Footrest L,assy
10	SPG6-00531	Footrest R,assy
11		Rivet, Statutory Inscription Plate
12		Fixing plate,Rear box lock
13	SPG6-00043	Cover,battery case
14	SPG6-00043	Cover,battery case
15		Flange Lock Nut[]M8
16		Flange Nut, M6
17		Screw,M5×16
18		Fender,Frame Body
19		Flange Bolt[]M8×45
20	SPG6-00047	Hook, Helmet
21		Flange Bolt, M6×12
22		Front Part,Frame
23		Statutory Inscription Plate
24		Flange Bolt, M8×12
25		Flange Nut, M5
26		Plain Washer φ 10× φ 30
27		Flange Lock Nut[]M10
28		Bolt with Washer, M6×12
29		Flange Bolt, M6×16

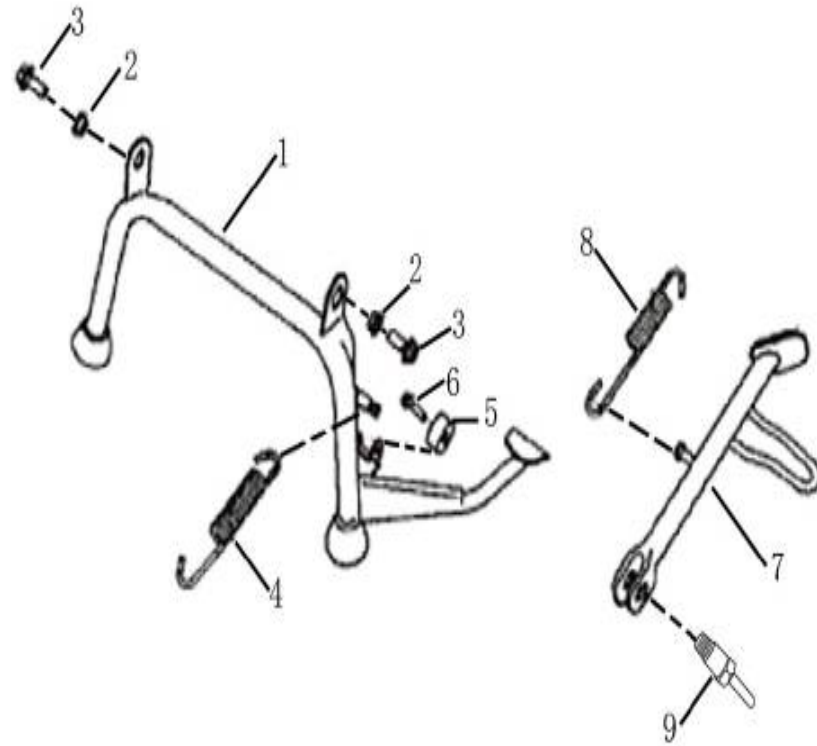


Figure 17

NO.	Part Number	Description
1	SPG6-00235	Main Stand Assy(250mm)
2		T-Bush, Main Stand
3		Flange Bolt, M10×30
4	SPG6-00240	Spring, Main Stand
5		Cushioning Rubber, Main Stand
6		Flange Bolt, M6×30
7	SPG6-00236	Side Stand Assy(220mm)
8		Spring, Side Stand
9		Bolt, Side Stand

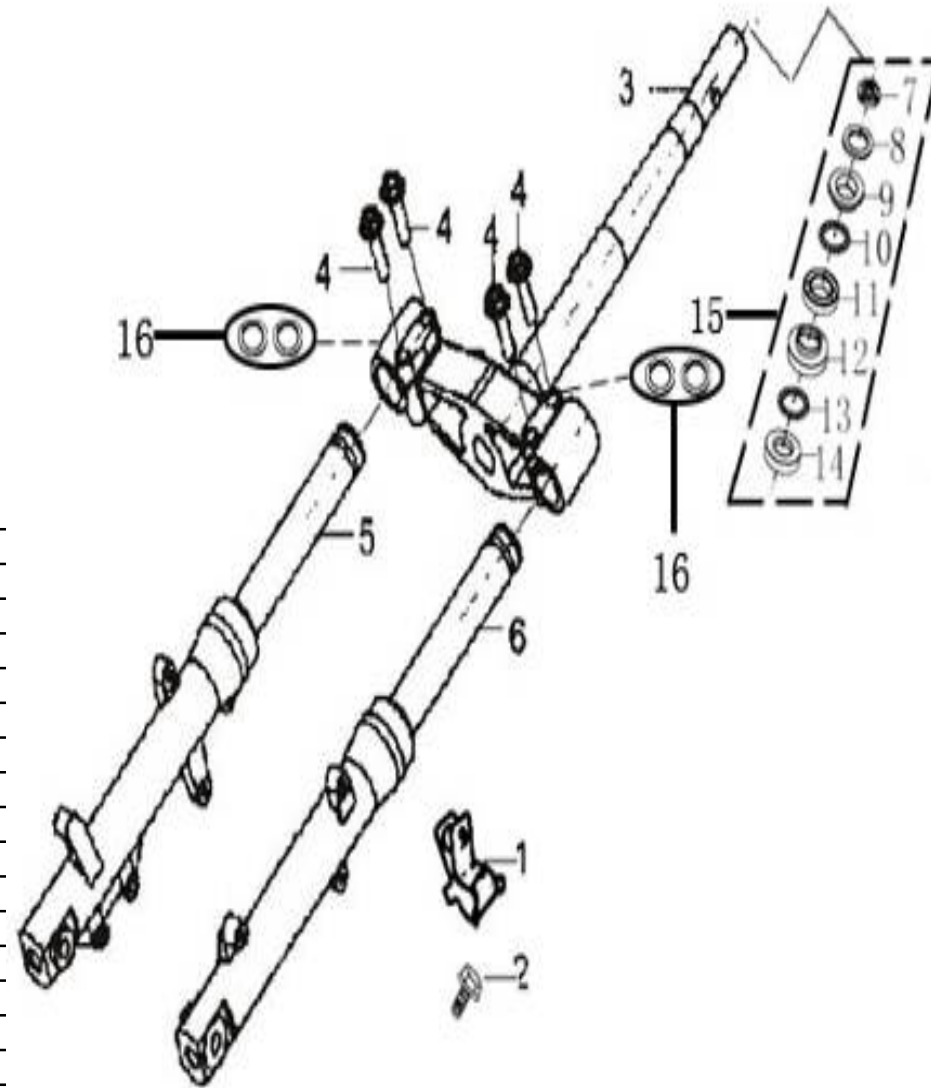


Figure 18

NO.	Part Number	Description
1		Clip, Front Hydraulic Hose
2		Flange Bolt, M6×12
3	SPG6-00315	Lower Bridge Assy, Steer Stem
4		Flange Bolt, M8×45
5	SPG6-00185	R. Front Shock Absorber
6	SPG6-00180	L. Front Shock Absorber
7		Nut, Stem lock
8		
9		Race, steering outer, upper
10		ball upper
11		Race, steering outer, upper
12		Race, steering outer, lower
13		Ball lower
14		Race, steering outer, lower
15	SPG6-00316	Steel Ball Bowl Assy
16		Spring Washer, ϕ 8

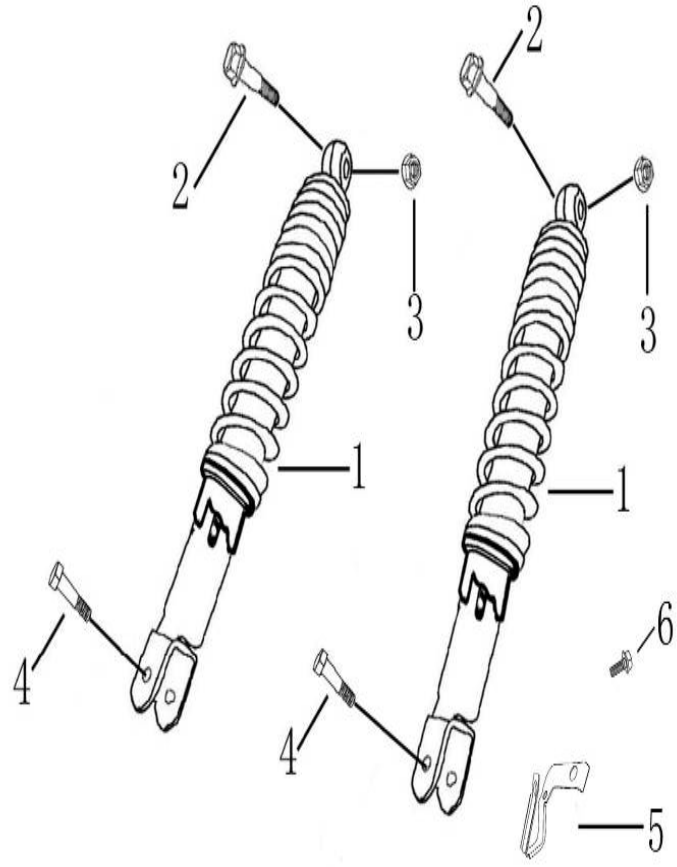


Figure 19

NO.	Part Number	Description
1	SPG6-00295	Rear Shock Absorber Assy [1]335mm
2		Flange Bolt, M10×40
3		Flange Lock Nut M10
4		Hex Bolt, M8×32
5		
6		Flange Bolt, M6×12

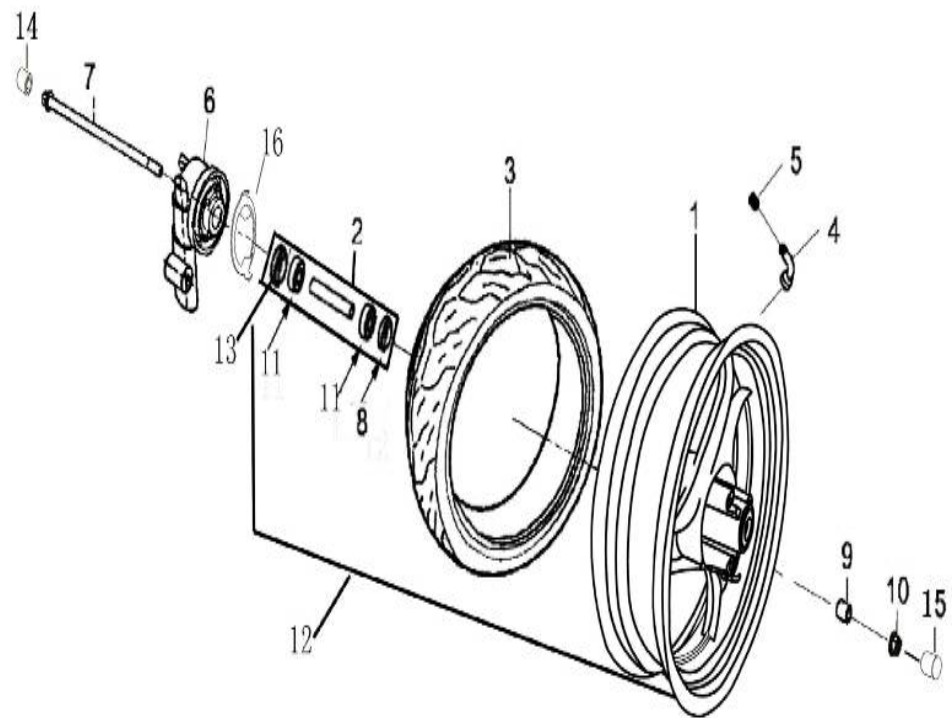


Figure 20

NO.	Part Number	Description
1	SPG6-00385	Rim, Front Wheel,3.50-13,silver white
2	SPG6-00386	Bush ϕ 13 \times ϕ 18 \times 85mm
3	SPG6-00335	Tyre, Front Wheel 130/60-13,CST
4	SPG6-00445	Tubeless Valve
5		Cap, Tubeless Valve
6	SPG6-00440	Count Gear Box, Odometer
7	SPG6-00010	Bolt, M12 \times 247
8		Oil Seal \square 40-50-5
9		Bush, ϕ 12 \times ϕ 23 \times 21
10		Flange Lock Nut, M12
11	SPG6-00387	Bearing6201-RS
12	SPG6-00388	Rim, Front Wheel Assy
13		Oil Seal \square 23-37-7
14		Front wheel spindle bonnet (14#)
15		Front wheel spindle bonnet (17#)

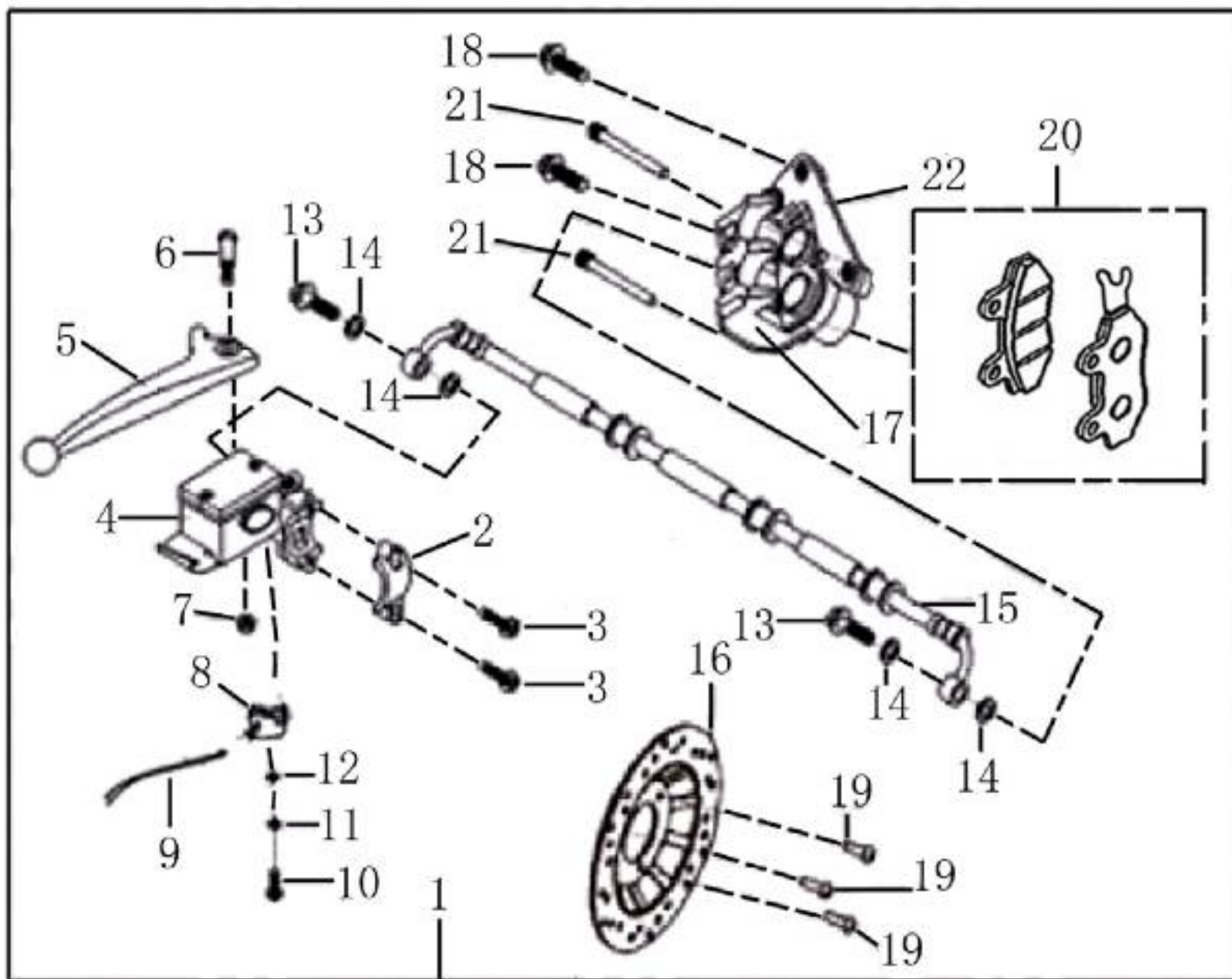


Figure 21

Figure 21

NO.	Part Number	Description
1	SPG6-00095	Front Hydraulic Brake System(Double Pump)
2		Cap, Front Hydraulic Cylinder
3		Inner Hex Nut, M6x22
4	SPG6-00535	Front Hydraulic Cylinder Comp
5	SPG6-00110	Lever, Right Handle
6		Bolt, Brake Lever M6×30
7		Hex Lock Nut, M6
8		Switch, Front Brake
9		Wire Cable, Front Brake Switch
10		Screw, M4×12
11		Spring Washer, φ4
12		Plain Washer, φ4×φ8
13		Connect Bolt, Hose, Front Brake
14		Copper Washer
15	SPG6-00115	Hydraulic Hose, Front Brake
16	SPG6-00275	Brake Disc. Assy, Front Wheel
17	SPG6-00135	Caliper Comp, Front Brake(Double Pump)
18		Flange Bolt, M8×25
19		Inner Hex Bolt, M8×25
20	SPG6-00125	Brake Plate Assy
21		Bolt, Brake Plate Assy, Front Brake
22		Bracket

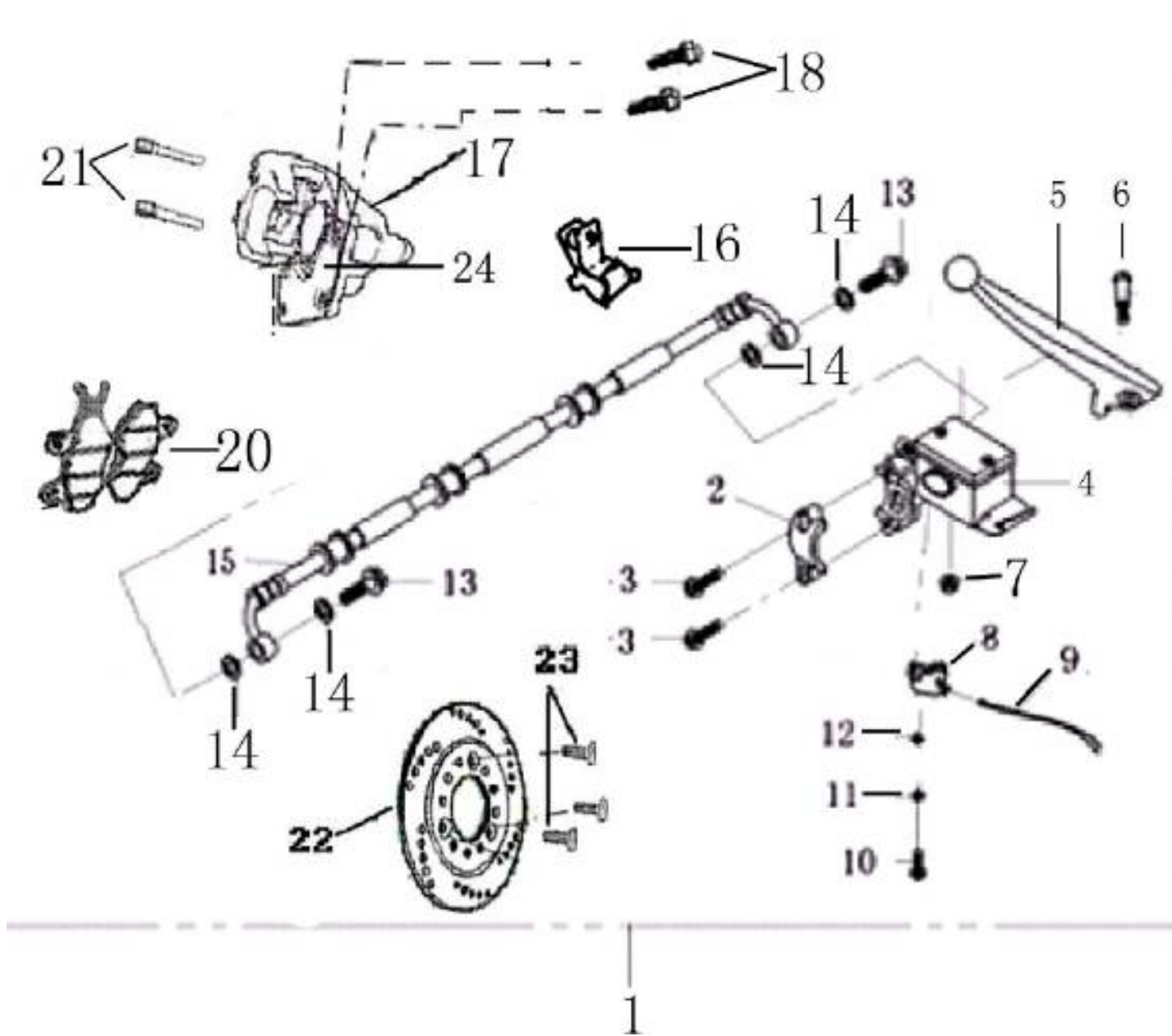


Figure 22

Figure 22

NO.	Part Number	Description
1	SPG6-00100	Rear Hydraulic Brake System(Double Pump)
2		Cap, Rear Hydraulic Cylinder(aluminum)
3		Bolt, M6×22
4	SPG6-00540	Rear Hydraulic Cylinder Comp
5	SPG6-00105	Lever, Left Handle
6		Bolt, Brake Lever M6×30
7		Hex Lock Nut, M6
8		Switch, Rear Brake
9		Wire Cable, Rear Brake Switch
10		Screw, M4×12
11		Spring Washer, φ4
12		Plain Washer, φ4×φ8
13		Connect Bolt, Hose, Front Brake
14		Copper Washer
15		Hydraulic Hose, Rear Brake
16		Drill tubing clip
17	SPG6-00140	Caliper Comp, Rear Brake(Double Pump)
18		Flange Bolt, M8×25
20	SPG6-00130	Brake Plate Assy
21		Bolt, Brake Plate Assy, Rear Brake
22	SPG6-00280	Brake Disc. Assy, Rear Wheel (φ220×4mm)
23		Fixing Bolt, Rear Brake Disc.
24		Bracket